

BLE Networking Hotel System



**Industrial
Estate**

Hotel





CONTENT

01. System Logic

02. System Introduction

03. Case Study

04. Model Recommend

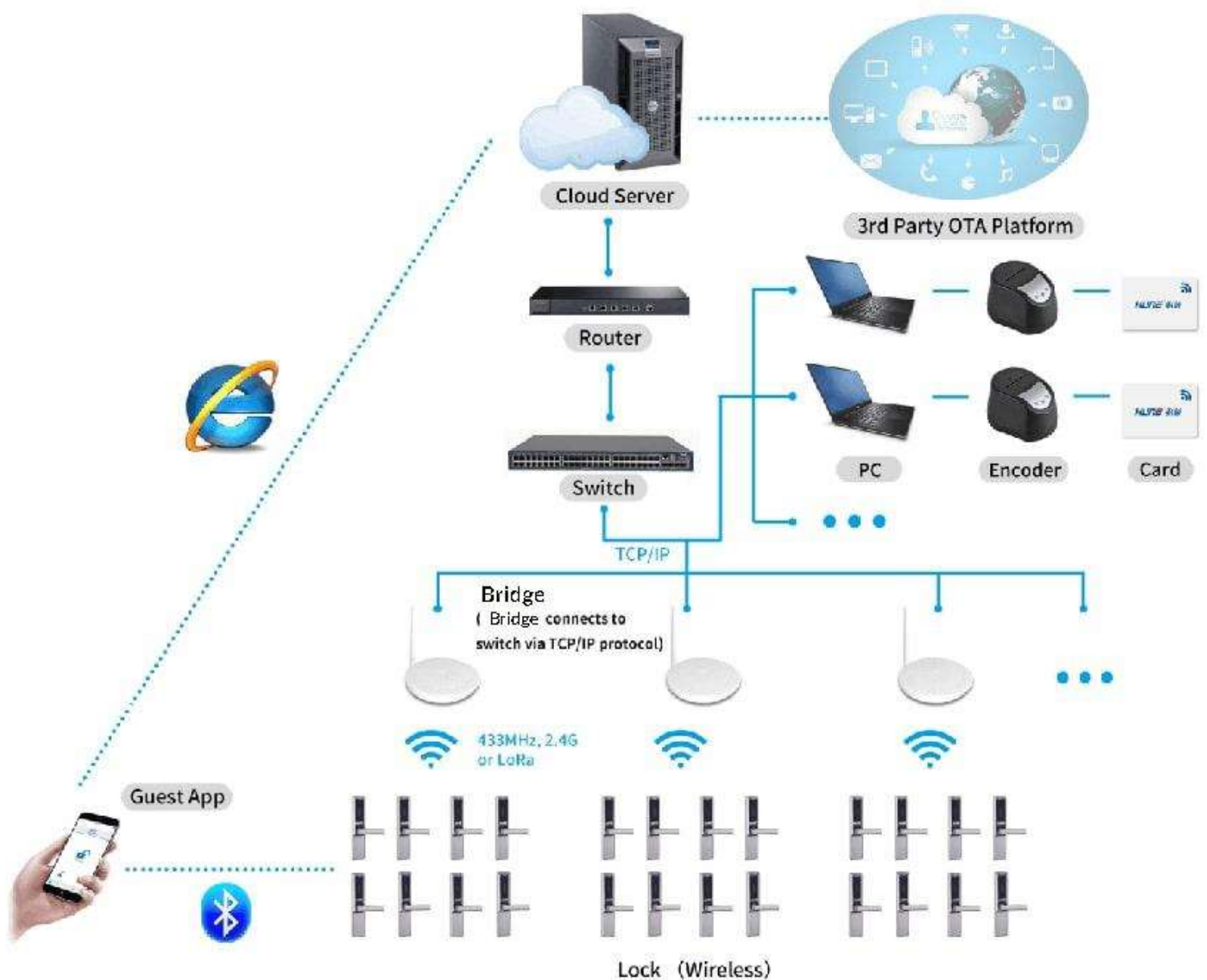
System Logic



01

The image features a large, intricate network of interconnected nodes and lines, resembling a complex graph or a neural network. The nodes are represented by small black dots, and the connections are thin, light gray lines. The network is dense and irregular, with many branches and loops. In the center of this network, the text '01' is displayed in a large, bold, black font. Below the '01' is a small, horizontal gray bar. The entire network is contained within a light gray rectangular area. Outside this area, there are three smaller, isolated network structures: one in the top left, one in the top right, and one in the bottom right. Each of these smaller structures consists of a few nodes connected by lines, forming a simple triangle or a small cluster.

BLE Networking Hotel System



**Facility
Require**

Domain Server & TCP/IP

**Domain
Server**

Windows 7 or up+ 4G Internal Storage

| BLE Networking Hotel System

Cloud & System
Communication

Networking

Bridge & System
Communication

LAN (POE version recommend)

Bridge & Lock
Communication

433/Lora/ Zigbee

Phone & Lock
Communication

Bluetooth

1 What other devices you should buy from HUNE?

Card Encoder

——for encode cards.

Bridge

—— HUNE will offer bridge according to the propotion of 1:8(1 bridge bind 8 locks), if you need more bridge because of special floor plan, please contact us for cost.

2 How many lock one bridge can bind?

Lora

—— 1 bridge can bind 6-8 locks, communicate distance is 20 meter in maxium.

Zigbee

—— 1 bridge can bind 6-8 locks, communicate distance is 20 meter in maxium.

| BLE Networking Hotel System

3

Will HUNE offer the guest APP?

Use HUNE Logo APP

—— Yes, this APP is free of charge

Use Other Logo APP

—— Sorry, cause Apple shop and Google shop will audit all APP, if APP are too similar to each other, APP can not pass the audit. So HUNE can not just change the logo for you.

Compatibility with existing APP

—— HUNE can offer API for the locking system operation

4

What is the communication way of this system?

Bridge connect to Server

—— WiFi or Category 5 cable

Lock connect to Bridge

—— Lora or 433, and Zigbee can be negotiable.

Compatibility with existing APP

—— HUNE can offer API for the locking system operation

6

Where is HUNE server?

HUNE server was established in Mainland China for maintenance.

Hotel should have a domain server for card issuing and system central control. HUNE server is for ekey issuing and transpond

S Y S T E M

INTRODUCTION



02

- Real-time Monitor
- Remote Operation
- Guest APP unlock
- Low Maintenance Cost



Real-time Monitor

Unlock Record

- Unlock record can be tracked in system

Room Name : 666	Gateway ID : 005639360479476
Lock ID : 007769664259439	Status : Online <input checked="" type="checkbox"/> Always open <input type="checkbox"/> Low Voltage <input type="checkbox"/>
Lock Operation :	<div><div>Unlock</div><div>Update Clock</div><div>Check Clock</div><div>Check Unlock Records</div></div>

Battery Status

- Battery status can be checked in system

Unlock

Lock information

Room Name101

Lock ID026461395550244

Battery38%



Remote Operation

Remote Unlock

- Remote unlock doors (Individual / All)

Room Detail

Room Name : 666	Gateway ID : 005639360479476
Lock ID : 007769664259439	Status : Online <input checked="" type="checkbox"/> Always open <input type="checkbox"/> Low Voltage <input type="checkbox"/>
Lock Operation:	<div>UnlockUpdate ClockCheck ClockCheck Unlock Records</div>
Begin : 15:22:00	End : 22:22:00 <input checked="" type="radio"/> On <input type="radio"/> Off <div>Power Saving Mode</div>
<input type="checkbox"/> Always open <input checked="" type="checkbox"/> Limited Period	
Operate Type: <input checked="" type="radio"/> Password <input type="radio"/> Card	<div>Card/Password Authorization</div>
Set Begin Time 2020-08-03 15:22:18	Set End Time 2020-08-10 15:22:18
Staff Begin Time 2020-08-03 15:22:18	Staff End Time 2020-08-10 15:22:18

CheckRemote Authorization

Remote Cancel / Authorize

- Remote Cancel /Authorized ekey or card

Room Pass Card

Room Name

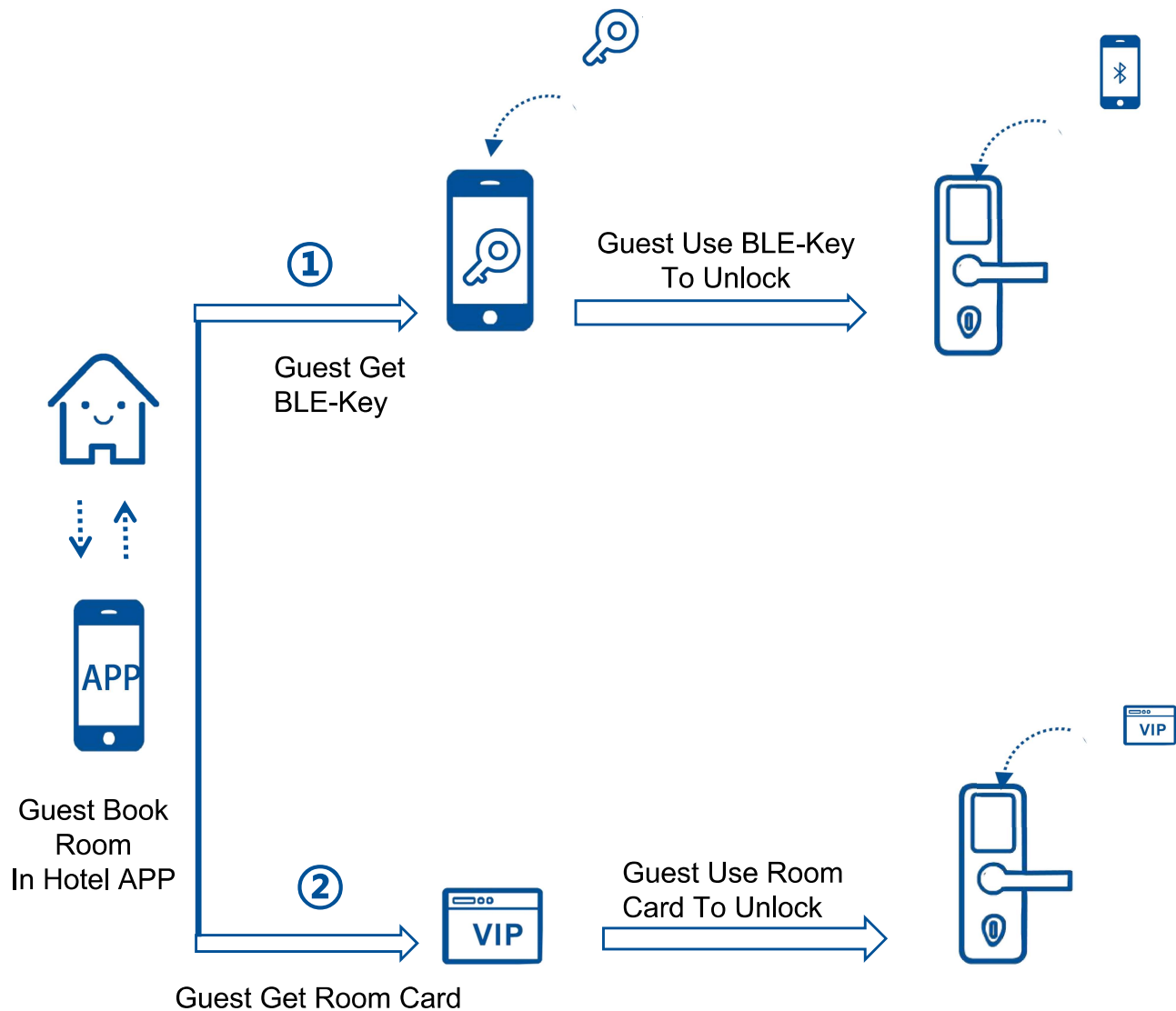
Modify Room Password

download Room Password

Change room-level password online

Close

Guest APP UnlockBLE



Management APK

Unlock via LAN for security reason

No API integration required, need Android phone to install APK

Guest APP

Unlock via Bluetooth for instant unlock

API integration recommended, IOS and Andriod system can use



Low Maintenance Cost

PMS Integration

HUNE Access Control System is strong in compability. It can be integrated in most of the PMS or other management system. HUNE hotel locking system is authorized by OPERA.

Consumption System

HUNE Access Control System can be integrated in electricity or power supply system to allow a one card pass convenient life for your staff or students.

Others

- System take TCP/IP LAN as communicate network, to ensure the stability.

- System take RJ45 protocol to low the interference risk

- HUNE developed low power consumption solution to save cost.

- HUNE take Lora as near field communicate signal to low bridge cost and also enhance stability. (433 & Zigbee also available)

- System practical functions enhance the security grade but low labor cost in management

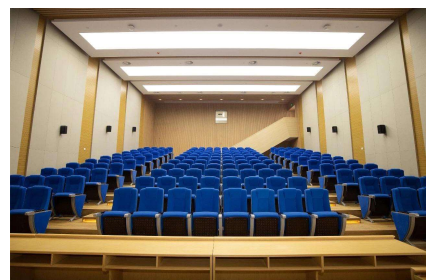
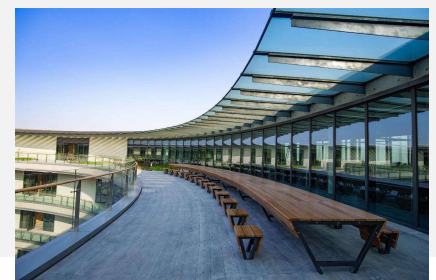
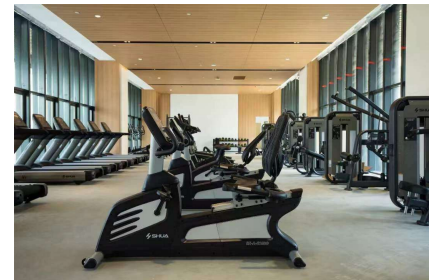
C A S E
S T U D Y

03

VIVO Intelligent Industrial Estate
(Wired Version)

VIVO Intelligent Industrial Estate

WIRED VERSION



VIVO Intelligent Industrial Estate cover 345,000 m² and constructed by 14 main buildings.

It included Park, Entertainment rooms, Canteen, Dorm, Workshop, Conference Room & Office. It is not only a factory but also a community for 20,000 people.

This project required a one card pass solution for access control, get electricity and water supply in dorm, and also for attendance records.

VIVO Intelligent Industrial Estate

WIRED VERSION

Convenience & Security

VIVO required visitors can not enter without permit, and all entry and exit records should be kept for security reason.



HUNE system can issue cards to visitor and card will be invalid once expired. Visitors also can not exit without card. All entry and exit record are kept for the security department.

VIVO required dorm unlocked by staff card. And this can be allocated conveniently.

Locks can be remote unlock for emergency.



HUNE system can assign dorm for staff then send command to unlock via wired network. Lock can unlock by authorized staff card in certain period.

All unlock records should be kept in system and also can be remote monitored for security reason.

Admin user can unlock in system for emergency remotely even without the authorized card.

All Unlock record will be kept in system for security reason. Each lock can reserved latest 3000 records.

Unlock Record

Unlock Time	Unlock ID	Remark
2020-07-21 09:30:35	admin	Remote Unlock

VIVO Intelligent Industrial Estate

WIRED VERSION

Convenience & Security

VIVO required this online lock should be low power consumption and can supply by DC. But all wires should be concealed.



HUNE improve RFID card lock for this system for low power consumption and upgrade it to be DC power supply version. HUNE applied heavy duty concealed door loop for the wires.



VIVO required access control system to be integrated in their existed management system.

Reject 2 systems for management.



HUNE do DLL integration with existed management system and run perfectly.

M O D E L
R E C O M M E N D

04

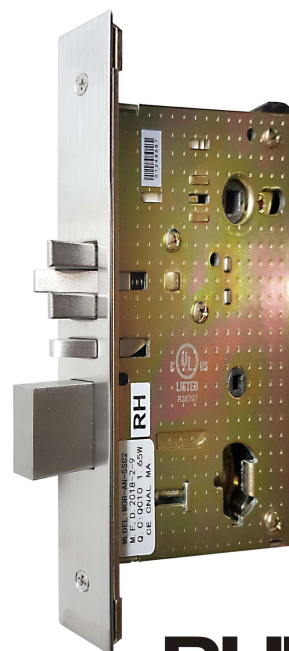


Model Recommend

RFID CARD LOCK



929VSS-DMF1



BHMATM
CERTIFIED

Be Safe.Be Secure. Lock for the Mark.

ANSI Mortise

Parameter Data

- **Dimension:** 46*280mm
- **Material:** 304 Stainless Steel
- **Mortise :** ANSI mortise(800,000 Times Test+ UL Fire Proof)
- **Battery:** 4pcs AAA Alkaline Batteries/USB Emergency Recharge
- **Unlock:** RF Mifare Card/Manual Key/ APP

Adaptable Door Type

—Wood door/ Steel door